

# Hayes Arboretum

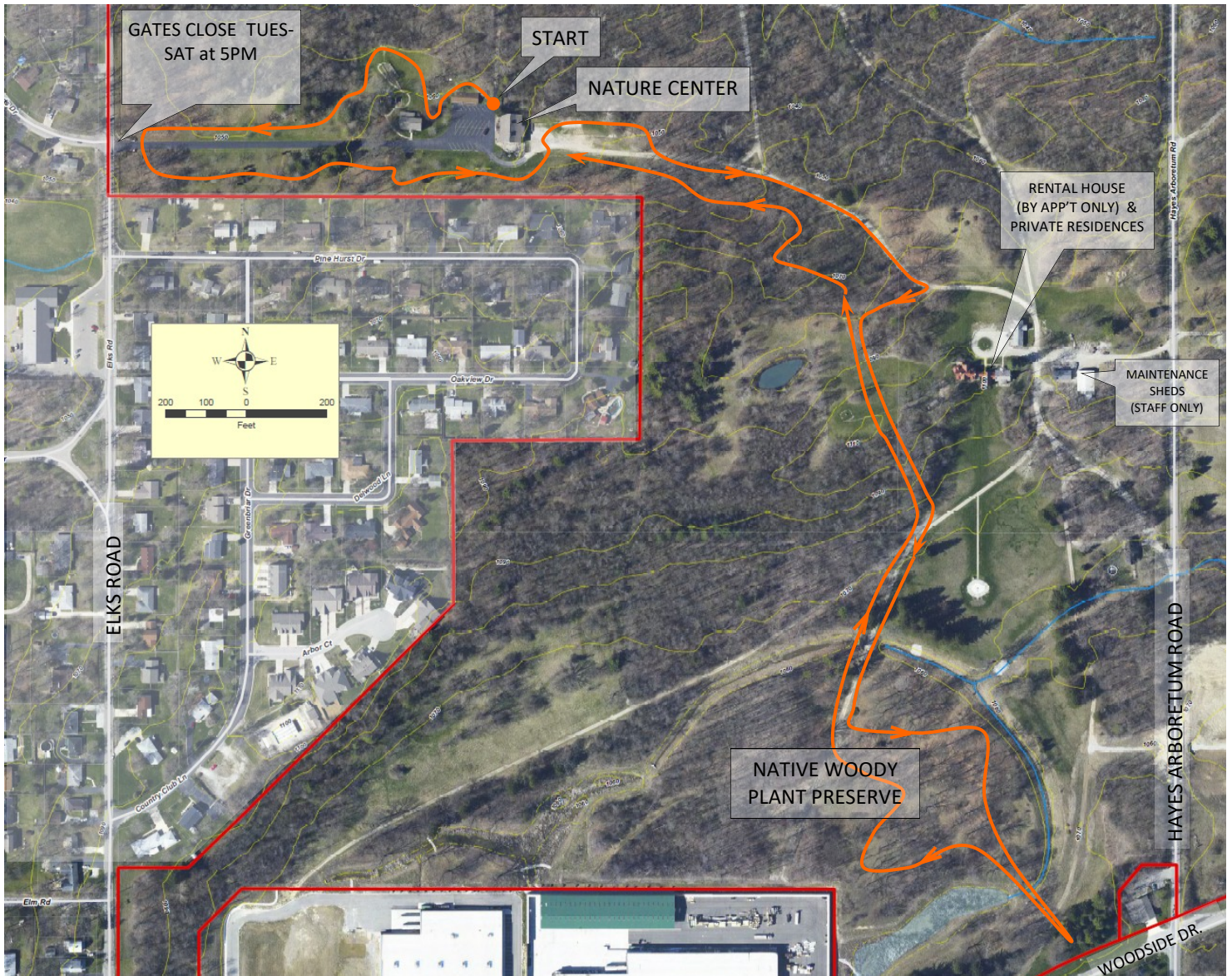


## 2019 ArbLeaf Leaf Collecting Map

9AM-5PM Tuesdays-Saturdays August 13-October 26. Begins West End of Annex

Follow the numbered signs and orange ribbons

Tree List on reverse side of this map



## HAYES ARBORETUM

The mission of Hayes Arboretum is to provide nature and recreational related education to our visitors, through instruction, experiences and amenities.

The obligation of Stanley W. Hayes Research Foundation, Inc. is to provide oversight, direction and funding for the educational project Hayes Arboretum.

**Trees found on Leaf Collecting Trail**  
**In order, as listed (white signs, orange letters & orange ribbons on Trees)**

1. Cucumber Magnolia
2. Cut-Leaved Beech
3. PawPaw
4. Pecan - C
5. Ohio Buckeye – C
9. Ginkgo
10. Osage Orange
12. Kentucky Coffee Tree - C
13. White Oak
14. Service Berry
15. Sugar Maple
17. Blackjack Oak
18. Sweetgum
19. River Birch
21. American Plum
23. Chestnut Oak
24. Black Walnut - C
25. Sweet Buckeye - C
26. Persimmon
27. Eastern Red Cedar
28. Pin Oak
- 28-A. Redbud
29. American Beech
30. Ironwood
31. Box Elder
32. Sycamore
33. Slippery Elm
34. Virginia Creeper- C

**Note: #6, 7, 8, 11, 16, 20, 22 not included**



**2019 ArbLeaf August 13-October 26**

**\*\*Be sure to take this part of the trail to collect the following leaves\*\***

- |                          |                   |
|--------------------------|-------------------|
| A. Norway Spruce         | T. Honey Locust-C |
| B. Chinquapin Oak        | U. White Pine     |
| C. Shellbark Hickory - C | V. American       |
| D. Blackgum              | Bladdernut -C     |
| E. Black Maple           |                   |
| F. Pignut Hickory-C      |                   |
| G. Flowering Dogwood     |                   |
| H. Cork Elm              |                   |
| I. Hawthorn              |                   |
| J. Bur Oak               |                   |
| K. Black Oak             |                   |
| L. Shagbark Hickory - C  |                   |
| M. Tulip Tree            |                   |
| N. Blue Beech            |                   |
| O. Basswood              |                   |
| P. Red Oak               |                   |
| Q. Shingle Oak           |                   |
| R. Sawtooth Oak          |                   |
| S. Blue Ash—C            |                   |

Please do not damage trees by yanking leaves or breaking branches. Remove leaves correctly by following the leaf stem to the branch and break the stem backwards. The leaf will just snap off. This will also ensure that you get the entire leaf with respect to whether it is a "simple" or "compound" leaf.

