

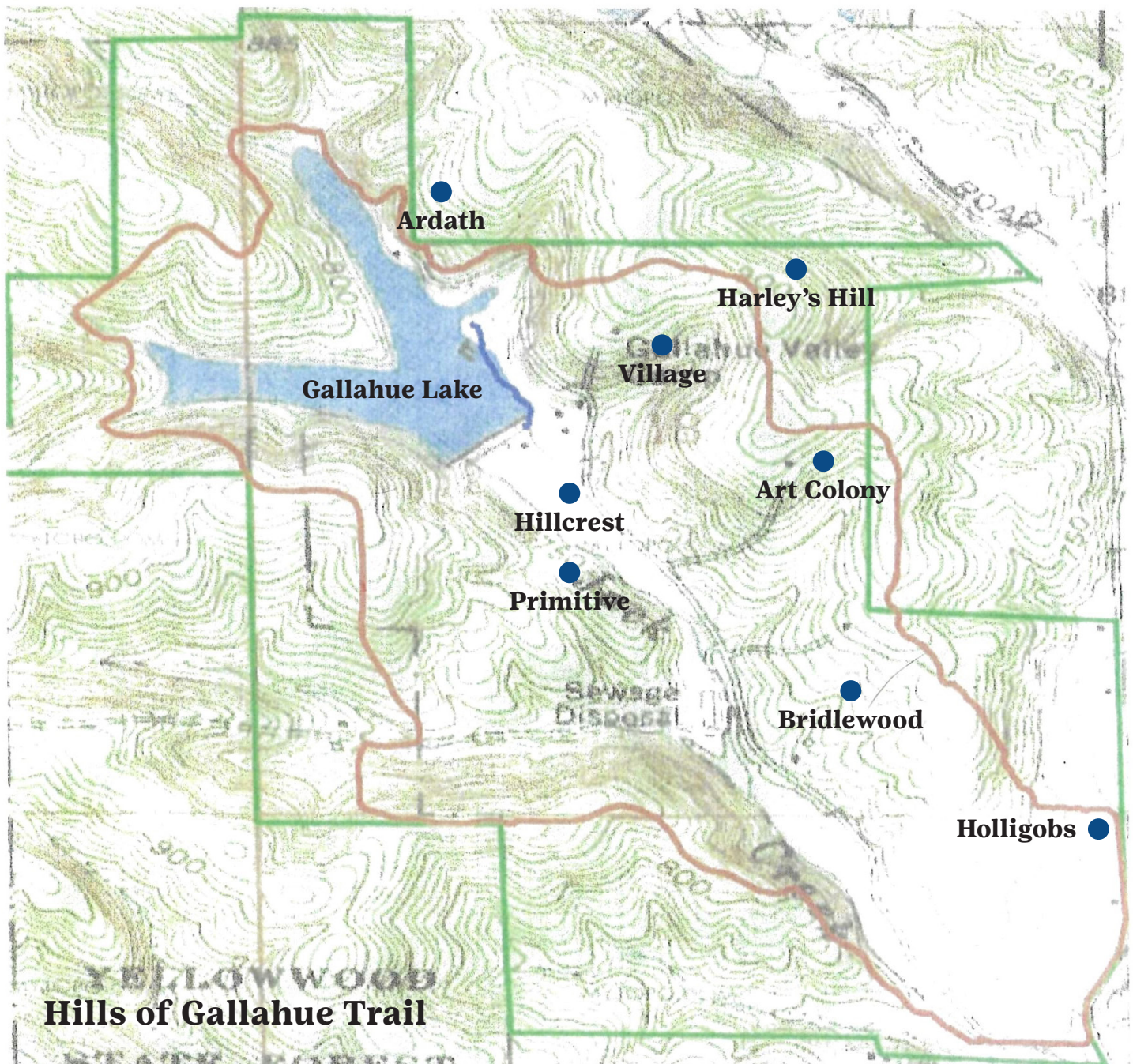


Patch Curriculum

Preface

Set in the rolling hills of southern Indiana, Camp Gallahue offers acres of woods to explore! Swim or canoe on the lake, hike in the woods, play games in the valley, ride horses at the barn, or practice archery at our range. Don't forget the campfires, crafts, and camp songs!

The Hills of Gallahue trail is six miles long, and you can access it from any of the platform tent units. To earn this patch you must hike the entirety of the trail and complete all the steps on the following pages.



Complete all of the following steps.

Make a plan.

This trail is approximately six miles long and may take several hours. You will want to work with your troop to write down a plan and print off the map. Answer the following questions with your hiking buddies:

1. Will you need snacks?
2. What time of day will you go?
3. What does the weather look like?
4. What other questions can you answer before you head off on your trek?



Visit the Holligobs and build a fairy house.

The fairies of the Holligobs look after all of the campers who stay at Camp Gallahue—but be careful, if you knock over one of their houses, they'll steal your left shoe in the middle of the night! Use the natural materials around you to build a new Holligob home.

Visiting the Holligobs? Here's two helpful hints to find your way.

- If you're coming from behind the Bridlewood Unit, the trail will fork. Make sure you stay to the left and follow the trail down to where the forest begins to have more pine trees.
- If you're coming from the road, you'll cross the bridge and you should see a trail on your left. This trailhead is sometimes overgrown, but you should see where the trail opens up into the woods.

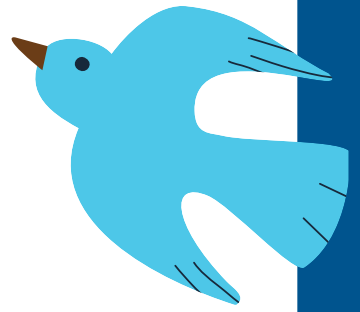
Sing a song from Harley's Hill to Art Colony.

One of the best camp traditions is singing a group song while making your way from one place to another. Pick a song and sing it while you're hiking between Harley's Hill and Art Colony (or vice versa depending on which direction you're hiking).



Identify four animals.

There are many forest animals who call Gallahue home; it's important to respect the environment and leave camp cleaner than you found it. As you're hiking, take note of at least four animals that are living in the forest. When you're done with your hike see what you can learn about those animals!



Congrats on completing the Hills of Gallahue patch curriculum!

Patches are available at the Girl Scout Shop.

